



## FACTSHEET

---

# LAND DEGRADATION NEUTRALITY TECHNICAL ASSISTANCE FACILITY

Land Degradation Neutrality (LDN) is a powerful vision for the future (UN SDG 15.3). It refers to a state where the global net amount of healthy and productive land remains stable (or increases). Achieving LDN is instrumental to meeting many other SDGs, including climate action.



# PARTNER TO THE LDN FUND

The Land Degradation Neutrality Fund, co-promoted by the UNCCD, is a first-of-its-kind fund investing in profit-generating sustainable land management and land restoration projects that contribute to SDG 15.3.

The LDN Fund provides long-term debt and equity financing for sustainable land-use projects that reduce or reverse land degradation. It focuses on large-scale projects that integrate smallholders and local communities, and has a dedicated window for small-scale projects and SMEs.

It is structured as a blended finance fund, pooling resources from both public and private investors committed to the goal of stopping land degradation. The fund is designed to offer financing solutions that are required for land-use projects that deliver long-term, sustainable impacts at scale, in ways other investors or banks might not – for example, longer tenors, longer grace periods, and

more flexible repayment schedules. The technical assistance facility (TAF) is currently being set up by IDH, the Sustainable Trade Initiative, in parallel with the LDN Fund, which is being developed by responsible investment specialist Mirova. The TAF will provide grants to assist in project preparation, as well as post-investment technical assistance.

## LDN TECHNICAL ASSISTANCE FACILITY

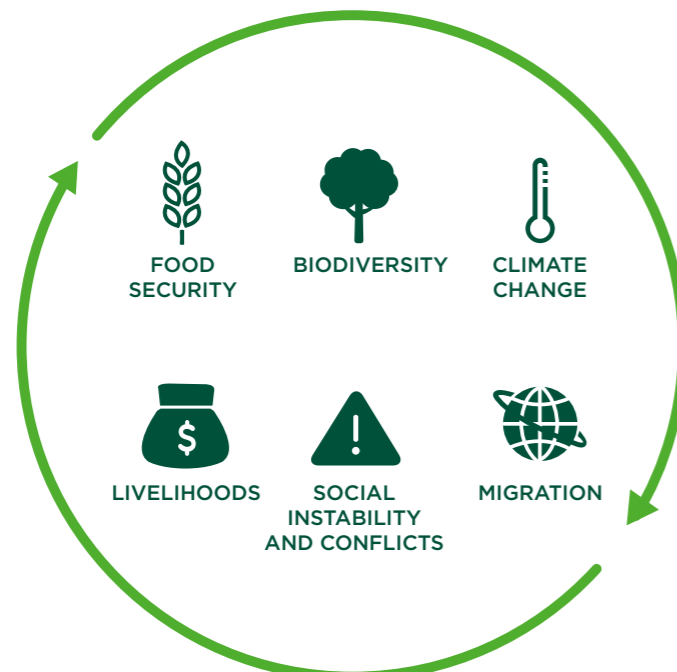
Investments in sustainable land management practices are needed to avoid, reduce and reverse land degradation. However, numerous market studies have identified project preparedness as a major bottleneck for sustainable land management investment. The LDN technical assistance facility (TAF) helps to alleviate this bottleneck, forming an essential link between projects, the LDN Fund, and its impacts.

# THE GLOBAL CHALLENGE OF LAND DEGRADATION

HOW COULD LAND DEGRADATION AFFECT OUR FUTURE?

### Why is it important?

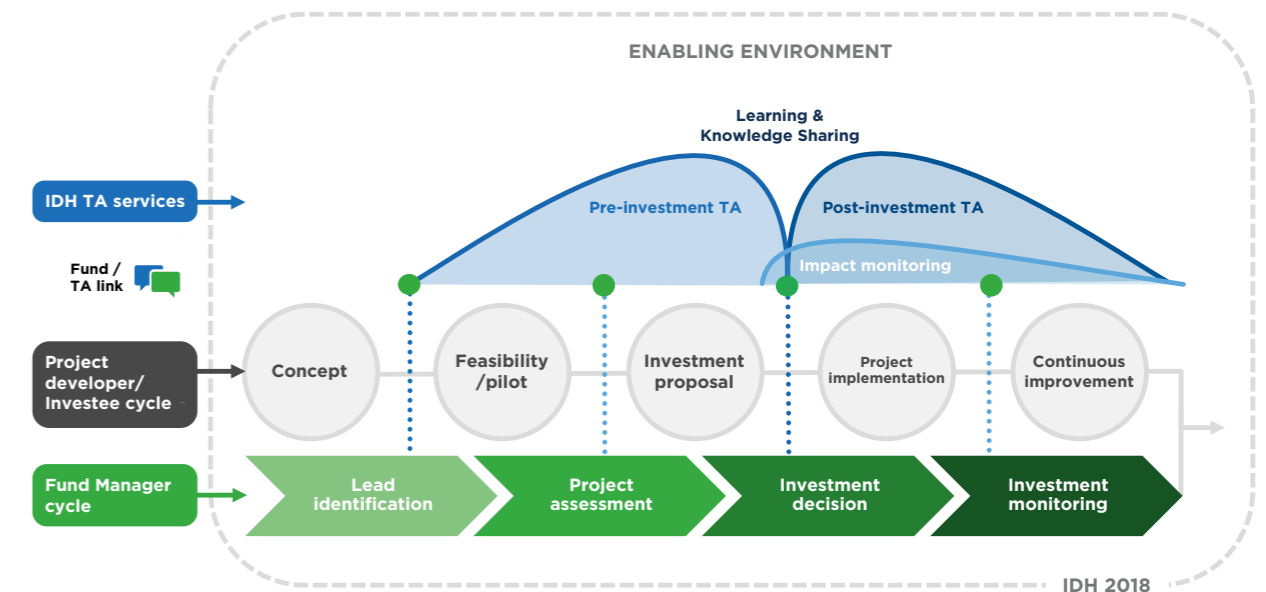
Land degradation threatens life on Earth, with severe impacts on food security, livelihoods, climate change, biodiversity, and ecosystem services.



### What can be done?

Investments in sustainable land management practices are needed to avoid, reduce and reverse land degradation. These practices include agroforestry, agroecology and sustainable agriculture techniques, which are proven and ready to be scaled up.

## LDN TAF SERVICES



## LDN TAF SERVICES

Technical assistance is essentially advice, assistance or training that is provided to enable transactions, reduce risks and increase development impact.

The TAF provides grants and reimbursable grants, tailored according to the attributes and needs of each project. Technical assistance falls into four main categories:

- **Pre-investment stage** project design support, to build a strong and balanced portfolio of bankable projects for the LDN Fund.
- **Post-investment assistance** to projects in the implementation phase, so that project developers have greater capacity to implement projects to a higher technical standard and/or with increased positive social and environmental impacts.
- **Impact monitoring**, including of LDN impacts. This enables project developers and the LDN Fund to better monitor their impacts and practice adaptive management more effectively.
- **Learning & Knowledge Sharing** of successful models for sustainable for sustainable land management investment, beyond the LDN Fund and its projects.





**For more information, contact:**

**IDH Sustainable Trade Initiative,**

- Nienke Stam, Senior Program Manager IDH  
Stam@idhtrade.org
- Dagmar Mooij, Program Officer IDH  
Mooij@idhtrade.org

