

IDH Tech Learning Agenda

Structured learning for impact and continuous improvement

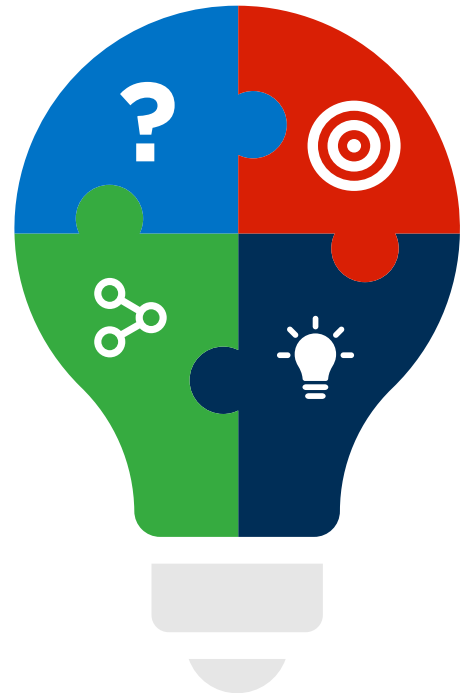
Technology is key to delivering services to farmers at scale. IDH advises companies in the use of technology to optimize their farmer inclusive businesses.



Key learning questions we want to answer to create impact

In smallholder inclusive business models, how and to what extent technology:

- ▶ lowers sourcing/service cost
- ▶ improves service delivery effectiveness
- ▶ promotes commercial viability
- ▶ enhances scale and replication
- ▶ reduces risk



Impact creation agents

- ▶ Value chain players
- ▶ Financial service providers



We create and share actionable knowledge in 3 learning pathways



- Analytical tools to identify technology opportunities that are cost effective for smallholder inclusive businesses



- Design sprints to support innovative ideas
- Piloting new ideas
- De-risk investments to promote technological innovations



- Studies published on technology usage in agriculture value chains
- Participate & conduct events to share knowledge among partners



We continuously and deliberately improve our insights and validate the learning question for relevance.